

Combitherm® CTP6-10G

Gas Boiler-free

ALTO-SHAAM

Combining multiple cooking functions into a single appliance, Combitherm® ovens provide endless versatility, reliability and unmatched performance. An all-in-one solution for efficient and consistent food production. Combitherm ovens do the work of a convection oven, kettle, steamer, fryer, smoker and more. Execute every dish, no matter how simple or complex, faster than ever with flawless precision and consistency.



CTP6-10G

Standard features

- Four cooking modes—steam, convection, combination, and retherm
- Programmable, touchscreen control
- Easy recipe upload/download via USB port
- Four fully automated cleaning cycles
- Front-accessible and retractable rinse hose
- LED illuminated door handle is designed for the needs of the busy kitchen, and provides visual notification of the oven status
- Absolute Humidity Control™ allows for selection any humidity level from 0-100% to maximize food quality, texture, and yield
- SafeVent™ provides automatic steam venting at the end of the cooking cycle



- 7** Seven full-size or GN 1/1 pans; seven half-size sheet pans, one row deep
- 2** Two side racks with seven non-tilt support rails; 11-3/4" [298mm] horizontal width between rails, 2-3/4" [70mm] vertical spacing between rails
- 72 lb [33 kg] product maximum
- 45 quarts [57 liters] volume maximum
- Three [3] shelves included. Additional wire shelves required for maximum capacity.

Configurations (select one)

Door swing

- Right hinged
- Recessed door, optional; increases oven width by 5" [127mm]

Electrical

- 120V 1ph
- 208-240V 3ph
- 208-240V 1ph
- 380-415V 3ph

Gas type

- Natural
- Propane

Accessories (select all that apply)

- CombiLatch™
- Stacking hardware
- Seismic feet package, optional
- Smoking feature, including one-step cold smoking (not available on units with security devices)
- Extended one-year warranty
- Automatic grease collection system, includes four 6-piece, self-trussing poultry racks #5014438, interior drip collection pan, and grease collection container with shut off valve

Cleaning

- Automatic tablet-based cleaning system, standard
- Automatic liquid cleaning system, optional

Probe choices

- Removable, single-point, quick-connect core temperature probe, standard
- Removable, single-point, quick-connect sous vide temperature probe, optional
- Hard-wired, multi-point core temperature probe, optional (factory only installed)

Security devices for correctional facility use

- Optional base package (not available with recessed door): includes tamper-proof screw package, excludes temperature probe
- Anti-entrapment device, optional
- Control panel security cover, optional
- Hasp door lock (padlock not included), optional
- Removable, single-point, quick-connect core temperature probe, optional

Installation options (select one)

- Alto-Shaam Combination Factory Authorized Installation Program - available in the U.S. and Canada only
- Installation Start-Up Check - available through an Alto-Shaam authorized service agency



ANSI/NSF 4

0063

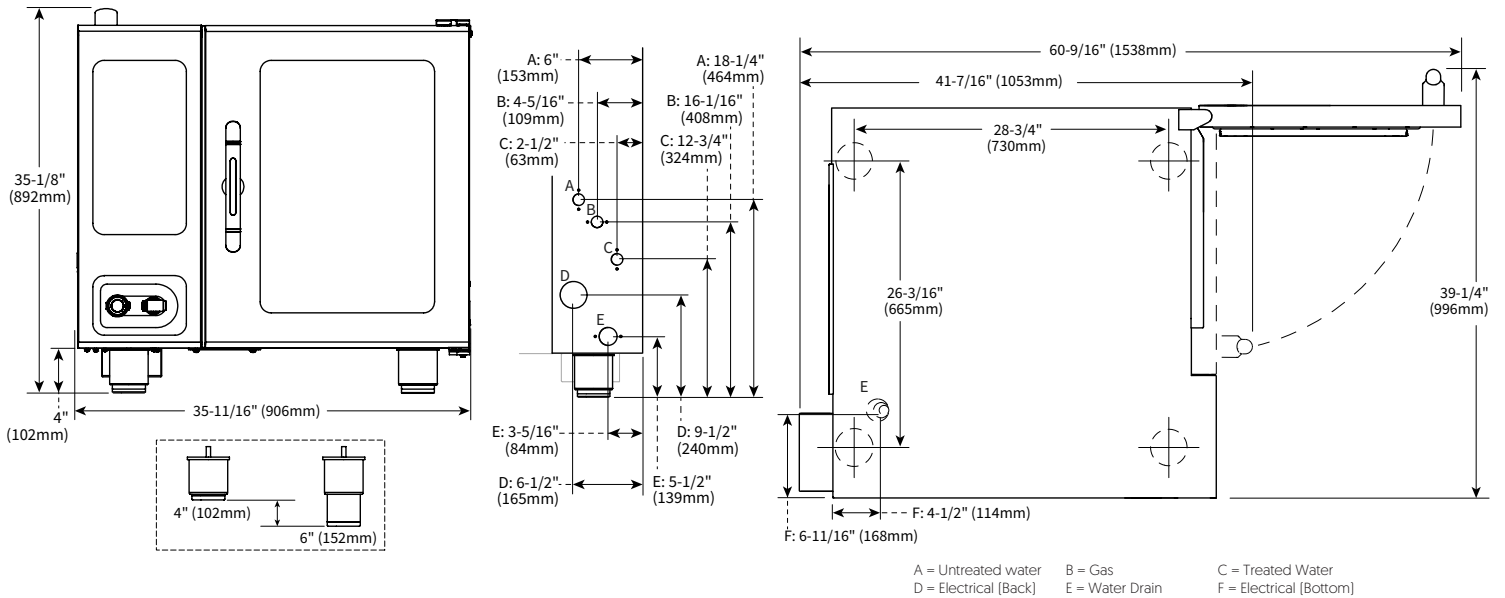
WWTW 154
WW 40202
Global-Mark.com.au

Global-Mark.com.au®
© Number: GAS-10226101

Combitherm® CTP6-10G



Specification



DIMENSIONS

Model
CTP6-10G

Exterior (H x W x D)
35-1/8" x 35-11/16" x 41-7/16" [892mm x 906mm x 1053mm]
Exterior with recessed door (H x W x D)
35-1/8" x 40-11/16" x 41-7/16" [892mm x 1033mm x 1053mm]

Interior (H x W x D)
20-1/2" x 16-1/4" x 28-1/16" [520mm x 411mm x 712mm]
Net Weight
524 lb [238 kg]

Ship Dimensions (L x W x H)*
CTP6-10G 56" x 45" x 51" [1422mm x 1143mm x 1295mm]

Ship Weight*
590 lb [268 kg]

*Domestic ground shipping information. Contact factory for export weight and dimensions.



CLEARANCE

- Top: 20" [508mm]
- Left: 0" [0mm]
- Right: 0" [0mm] Non-combustible surfaces
2" [51mm] combustible surfaces
- Bottom: 5-1/8" [130mm]
- Back: 4" [102mm]
- 4-5/16" [109mm] optional plumbing kit



CHECK FIRST

- Oven must be installed level.
- Water supply shut-off valve and back-flow preventer when required by local code.
- Hood installation is required.
- Drain must not be located directly underneath the appliance.

Combitherm® CTP6-10G



Heat of rejection

CTP6-10G	Heat Gain qs, BTU/hr	Heat Gain qs, kW	Heat Gain qs, Mj/hr
	269	0.08	33.8



Noise emissions

A maximum 67 dBA was measured at 3.3 ft [1 m] from unit as tested on CTP10-20E.



CTP6-10G	V	Ph	Hz	Awg (mm ²)	ProPower™ Standard			With CombiSmoker® Option			Connection	Certification
					A	Breaker	kW	A	Breaker	kW		
† 120V**	120	1	60	12 [3.31]	6.8	20	.84	12.0	20	1.5	L1, L2/N, G	
† 208-240V	208	1*	50/60	14 [2.08]	4.8	15	1.0	7.3	15	1.5	L1, L2/N, G	
	240	1*	50/60	14 [2.08]	4.2	15	1.0	7.1	15	1.7	L1, L2/N, G	
† 208-240V	208	3	50/60	14 [2.08]	4.8	15	1.0	7.3	15	1.5	L1, L2, L3, G	
	240	3	50/60	14 [2.08]	4.2	15	1.0	7.1	15	1.7	L1, L2, L3, G	
380-415V	380	3	50/60	14 [2.08]	4.6	15	1.0	7.2	15	1.6	L1, L2, L3, N, G	
	415	3	50/60	14 [2.08]	4.2	15	1.0	7.1	15	1.7	L1, L2, L3, N, G	

† Per UL requirements, must be permanently connected to electrical supply source

* Electrical service charge applies

** Ground fault or residual current protection device must accommodate a leakage current of 20mA.

- Electrical connections must meet all applicable federal, state, and local codes.
- For use on individual branch circuit only.
- Ovens are not supplied with an electrical cord or plug.



Water requirements (per oven)

- Two cold water inlets - drinking quality
- One treated water inlet: 3/4" NPT connection. Line pressure 30 psi minimum dynamic and 90 psi maximum static [200-600 kPa] at a minimum flow rate of 0.26 gpm [1 L/min].
- One untreated water inlet: 3/4" NPT connection. Line pressure 30 psi minimum dynamic and 90 psi maximum static [200-600 kPa] at a minimum flow rate of 2.64 gpm [10 L/min]. Water drain: 1-1/2" [40mm] connection with a vertical vent to extend above the exhaust vent. Materials must withstand temperatures up to 200°F [93°C].

Water Quality Standards

It is the sole responsibility of the owner/operator/purchaser of this equipment to verify that the incoming water supply is comprehensively tested and, if required, a means of "water treatment" provided that would meet compliance requirements with the published water quality standards shown below. Non-compliance with these minimum standards will potentially damage this equipment and/or components and void the original equipment manufacturer's warranty. Alto-Shaam recommends using the Alto-Shaam Reverse Osmosis System to properly treat your water.

Inlet Water Requirements		
Contaminant	Treated Water	Untreated Water
Free Chlorine	Less than 0.1 ppm (mg/L)	Less than 0.1 ppm (mg/L)
Hardness	30-70 ppm	30-70 ppm
Chloride	Less than 30 ppm (mg/L)	Less than 30 ppm (mg/L)
pH	7.0 to 8.5	7.0 to 8.5
Silica	Less than 12 ppm (mg/L)	Less than 12 ppm (mg/L)
Total Dissolved Solids (tds)	50-125 ppm	50-360 ppm



Clearance requirements for water filtration system

Do not install a water filtration system behind unit.



Gas Requirements (gas type must be specified on order)
Hook-up: 3/4" NPT

UL Marked Appliances	Maximum Input BTU/h	Minimum Input BTU/h	Maximum Inlet Pressure Inches WC	Minimum Inlet Pressure Inches WC	Maximum Fuel Consumption*	
					CFH	GPH
Natural Gas	48,000	32,000	14.0	5.5	45.7	N/A
Propane				9.0	19.2	0.5

*Assumes an average heating value for natural gas to be 1050 BTU/SCF and a specific gravity of 0.60. The assumed value for propane gas is 2,500 BTU/SCF, and a specific gravity of 1.53.

AGA Marked Appliances	Maximum Input MJ/h	Minimum Input MJ/h	Maximum Inlet Pressure kPa	Minimum Inlet Pressure kPa	Maximum Fuel Consumption	
					m ³ /h	L/h
Natural Gas	50.6	33.8	3.48	1.13	1.3	N/A
Propane				2.75	0.5	2.0

CE Marked Appliances	Maximum Input		Minimum Input		Nominal Gas Pressure mbar	Maximum Gas Pressure mbar	Maximum Fuel Consumption m ³
	kWh (Hs)	kWh (Hi)	kWh (Hs)	kWh (Hi)			
2E (G20)	14.1	12.7	12.5	11.3	20	50	1.3
2LL (G25)					20		1.6
3P (G31)	13.8	12.7	12.2	11.3	37		0.5
3B/P (G30)					29		0.5

CONTACT US

W164 N9221 Water Street | Menomonee Falls, Wisconsin 53051 | U.S.A.
 Phone: 262.251.3800 | 800.558.8744 U.S.A./Canada | Fax: 262.251.7067 | alto-shaam.com