



Cloud-based Monitoring and Notification System

Stop Wasting Time, Energy and Money Monitoring Temperatures!

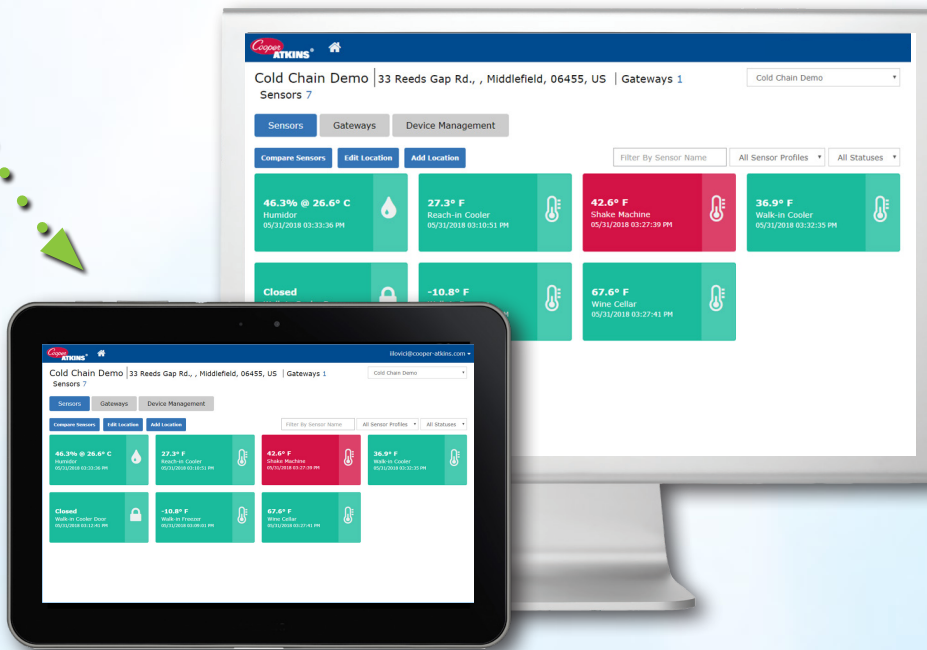
The **NotifEye™** cloud-based temperature monitoring and notification system is a low-cost wireless solution that is self-installable and ready to use out-of-the-box. The online portal can also be used to display data from certain Bluetooth-enabled products to allow digital integration within the Cold Chain.

Eliminate manual data logs and ensure consistent, accurate tracking of temperatures.

System data is accessible on-line 24/7, while out-of-range notifications are sent in real time as email and text alerts.

Multiple Applications:

- Refrigerator/Freezers
- Walk-ins/Reach-ins
- Prep Areas
- Dry Storage
- Salad/Deli Bars
- Steam Tables
- Open Air Cases
- Hot-holding Cabinets



How It Works

Wireless Sensors Send Data via Gateways to the NotifEye™ System and Send Out Instant Email and Text Alerts



Let **NotifEye™** keep an eye on your valuable perishable inventory and save you time documenting temperatures.

View the Online System and Live Data!

Log Into: digitalcoldchain.com
User Name: **notifeye** / Password: **password**



Accuracy to the Highest Degree

Cooper-Atkins Corporation • 800-835-5011 • 860-347-2256 • www.cooper-atkins.com

NOTIF EYE™

POWERED BY TEMPTRAK

Cloud-based Monitoring and Notification System

15906 & 15907 NotifEye Kits

15916 & 15917 NotifEye Kits

NotifEye sensors monitor and pass information to the NotifEye application which collects and records data 24/7. When preset conditions are met, email and text notifications can be sent. The system allows for a complete configuration and customization based on your facility setup. During power outages, data is stored on the gateway buffer to ensure important information is not lost.

Gateway Kit #15906 includes:

- (4) Temperature Sensors #15200
- (4) Batteries



Gateway Kit #15907 Includes:

- (2) Temperature Sensors #15200
- (2) Batteries



Each Kit includes:

- (1) Gateway #15515
- (1) Buffer Cable
- (1) Ethernet Cable
- Mounting hardware
- 1-Year Web Hosting*



* Renewal fee each additional year thereafter

Gateway Kit #15916 includes:

- (4) Product Simulator Sensors #15202
- (4) Batteries



Gateway Kit #15917 Includes:

- (2) Product Simulator Sensors #15202
- (2) Batteries



Each Kit includes:

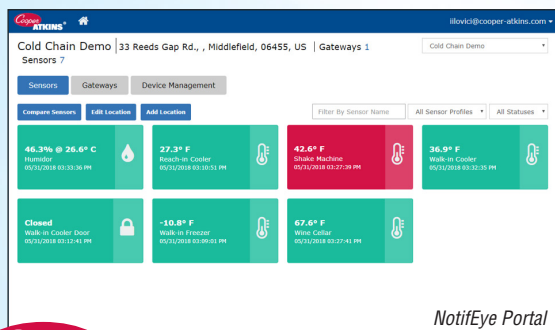
- (1) Gateway #15515
- (1) Buffer Cable
- (1) Ethernet Cable
- Mounting hardware
- 1-Year Web Hosting*



* Renewal fee each additional year thereafter

General Specifications
Ambient Operating Range: 0° to 140°F (-17° to 60°C)
Communication: RF 902 MHz
Sensor Range: 2500 feet (762 meters)
Probe Lead Length: 6 ft. (1.82 m)*
Power: Replaceable "2/3 A" Lithium (e.g., Duracell DL123A)
Battery Life: up to 5 years
1-year warranty
#15515 Gateway Specifications
<ul style="list-style-type: none"> Operating range: 32° to 140°F (5° to 50°C), up to 90% RH 30 days of data storage for 200 sensors sampling every 15 minutes.
#15200 Temperature Sensor*
Temperature Range: -25° to 180°F (-20° to 60°C)
Accuracy: ±1°F (±0.5°C)
#15202 Product Simulator Sensor
Temperature Range: -4° to 140°F (-20° to 60°C)
Accuracy: ±1°F (±0.5°C)

*Temperature sensors available with longer probe leads:
15200-10 – 10 ft. (3.05 m) / 15200-30 – 30 ft. (9.14 m)



SENSOR FEATURES:

- Sensor Configurations (Name Sensor, Set Heartbeat, Select Unit of Measurement)
- Sensor Configuration by Group
- Sensor Grouping by Gateway, Type or Status
- Unlimited Number of Networks, Sensors, Gateways and Users Supported
- Sensor Mapping Tool (Visual Placement)
- Data Reports and Sensor History Storage
- Visual Charts and Exports

ALERT FEATURES:

- On-screen Alerts and Notifications (Single User or Multiple Recipients)
- Notifications via Email and SMS Text
- Permission-based Access Control and Reporting
- List of Recent Alerts for Individual Sensors
- Corrective Actions feature for sent notifications

Additional sensors to expand your system are sold separately:

#15220 Humidity Sensor
Relative Humidity Range: 0-90% RH
Relative Humidity Accuracy: ±2% (10% to 90% RH)
#15201-01 Immersion Probe with vessel clip
Temperature Range: -25° to 180°F (-20° to 60°C)
Accuracy: ±1°F (±0.5°C)
#15230 Open/Close Sensor
<ul style="list-style-type: none"> Magnetic reed switch, terminal block allows for remote signal activation
#15506 Repeater
<ul style="list-style-type: none"> Extends sensor range, transmits up to 4 miles (open field range)

Temperature of humidity sensor is displayed in software, but is not a reading that can be alerted on



Accuracy to the Highest Degree

Cooper-Atkins Corporation • 800-835-5011 • 860-347-2256 • www.cooper-atkins.com

67-1589
V0918