



COOKING EQUIPMENT

SERVING THE FOOD INDUSTRY SINCE 1952

COUNTERTOP STAINLESS STEEL GAS GRIDDLE WITH THERMOSTATIC CONTROL

Item: OM43016

Item: OM43017

Item: OM43018

Item: OM43019

NELLA GAS EQUIPMENT SERIES

answers the needs of modern, busy catering establishments for reliable, well-built equipment that offers flexibility, performance, style and value for money. Nella gas equipment has been designed with safety, ease of operation and performance as paramount. Nella has a stylish and robust modular design, constructed of high quality brushed stainless steel, large "cool to touch" dials, large heavy-duty adjustable feet and easy to clean and remove accessories.

The Nella Griddles feature polished steel cooking surface for the best results in grilling. Breakfast, lunch or dinner, these griddles offers flexibility for your menu needs.



LIMITED
WARRANTY
PARTS AND LABOR



COOKING EQUIPMENT

COUNTERTOP STAINLESS STEEL GAS GRIDDLE WITH THERMOSTATIC CONTROL



COUNTERTOP STAINLESS STEEL GAS GRIDDLES WITH THERMOSTATIC CONTROL With 1 Burner

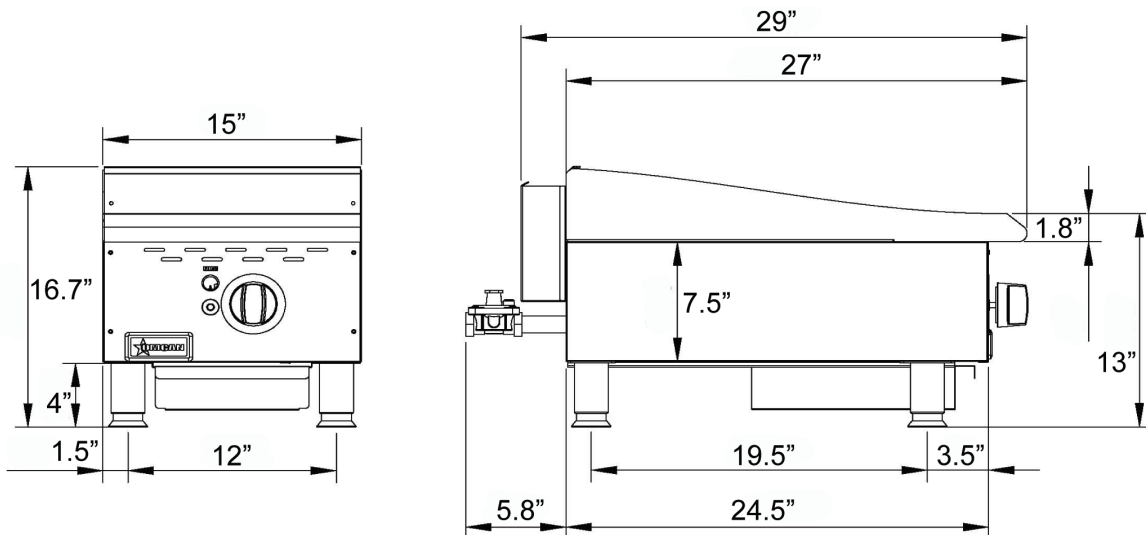


- Stainless steel construction and finish
- 3/4" thick polished steel and cooking surface
- Thermostatically controlled independent cooking zones
- Large and robust dial controls
- Stainless steel burners
- Burner thermostatic valves
- Removable full width waste tray
- Heavy-duty adjustable feet
- 3/4" rear gas connection
- Propane Conversion kit (43305) included

TECHNICAL SPECIFICATION

| | |
|----------------------------|---|
| ITEM NUMBER | OM43016 |
| MODEL | CE-CN-G15TPF |
| NUMBER OF BURNERS | 1 Burner |
| B.T.U. | 30,000 |
| COOKING AREA (WD) | 15" x 20" / 380 x 510 mm |
| *GAS TYPE | Natural Gas |
| TEMPERATURE | Thermostat Control |
| DIMENSION (WDH) | 15" x 32.7" x 16.7" / 380 x 830 x 425 mm |
| PACKAGING DIMENSIONS (WDH) | 17" x 32" x 18.5" / 430 x 820 x 470 mm |
| WEIGHT | 111.6 lbs/ 50.60 kg |
| PACKAGING WEIGHT | 136.1 lbs/ 61.75 kg |

TECHNICAL DRAWING & DIMENSIONS



Gas conversion to be completed by an approved gas field technician

COOKING EQUIPMENT
COUNTERTOP STAINLESS STEEL GAS
GRIDDLE WITH THERMOSTATIC CONTROL



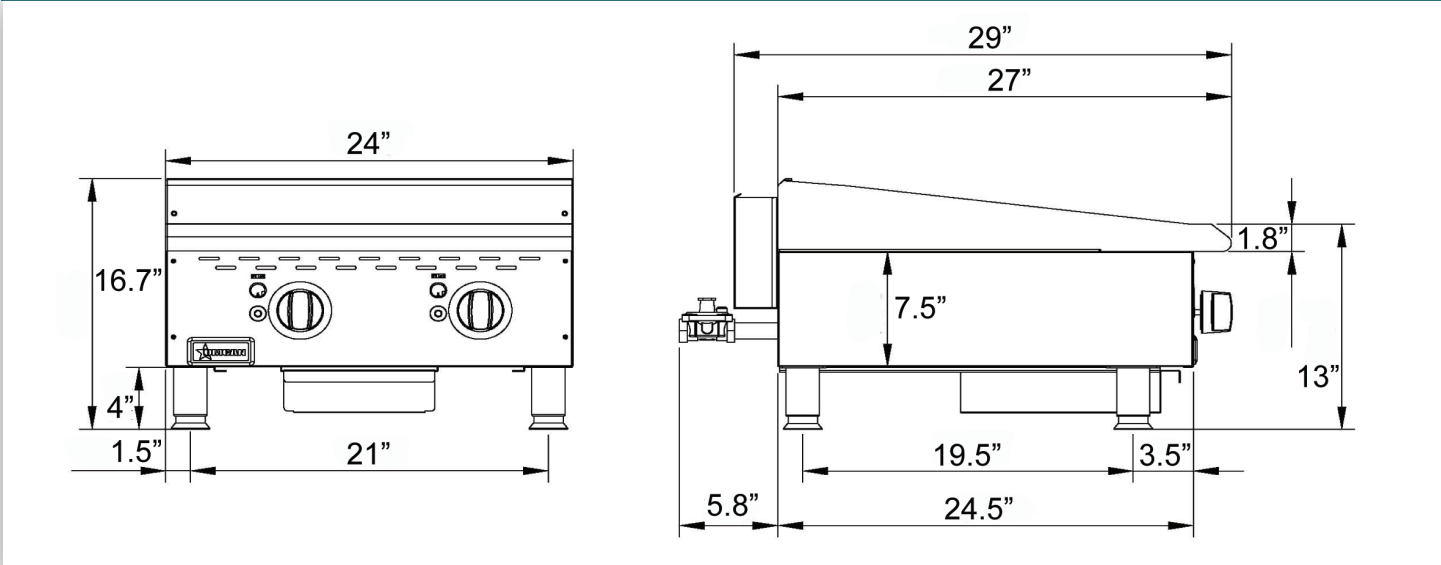
COUNTERTOP STAINLESS STEEL GAS GRIDDLES WITH THERMOSTATIC
CONTROL With 2 Burners



- Stainless steel construction and finish
- 3/4" thick polished steel and cooking surface
- Thermostatically controlled independent cooking zones
- Large and robust dial controls
- Stainless steel burners
- Burner thermostatic valves
- Removable full width waste tray
- Heavy-duty adjustable feet
- 3/4" rear gas connection
- Propane Conversion kit (43306) included

| TECHNICAL SPECIFICATION | |
|----------------------------|--|
| ITEM NUMBER | OM43017 |
| MODEL | CE-CN-G24TPF |
| NUMBER OF BURNERS | 2 Burners |
| B.T.U. | 60,000 |
| COOKING AREA (WD) | 24" x 20" / 610 x 510 mm |
| *GAS TYPE | Natural Gas |
| TEMPERATURE | Thermostat Control |
| DIMENSION (WDH) | 24" x 32.7" x 16.7" / 610 x 830 x 425 mm |
| PACKAGING DIMENSIONS (WDH) | 25" x 31" x 18" / 635 x 787 x 457 mm |
| WEIGHT | 125 lbs/ 56.85 kg |
| PACKAGING WEIGHT | 189 lbs/ 85.7 kg |

TECHNICAL DRAWING & DIMENSIONS



Gas conversion to be completed by an approved gas field technician

COOKING EQUIPMENT

COUNTERTOP STAINLESS STEEL GAS GRIDDLE WITH THERMOSTATIC CONTROL



COUNTERTOP STAINLESS STEEL GAS GRIDDLES WITH THERMOSTATIC CONTROL With 3 Burners

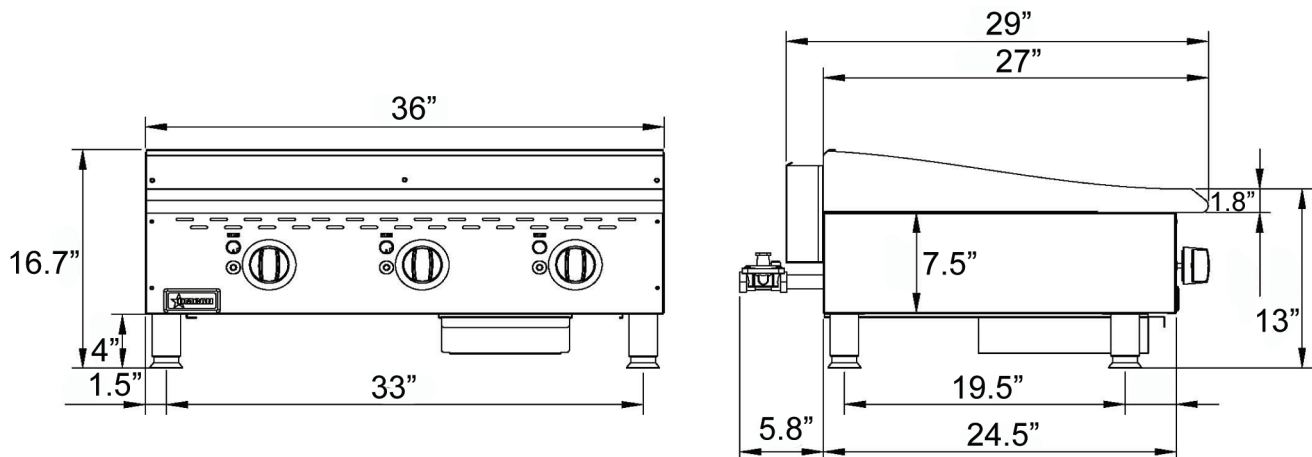


- Stainless steel construction and finish
- 3/4" thick polished steel and cooking surface
- Thermostatically controlled independent cooking zones
- Large and robust dial controls
- Stainless steel burners
- Burner thermostatic valves
- Removable full width waste tray
- Heavy-duty adjustable feet
- 3/4" rear gas connection
- Propane Conversion kit (43307) included

TECHNICAL SPECIFICATION

| | |
|----------------------------|---|
| ITEM NUMBER | OM43018 |
| MODEL | CE-CN-G36TPF |
| NUMBER OF BURNERS | 3 Burners |
| B.T.U. | 90,000 |
| COOKING AREA (WD) | 36" x 20" / 915 x 510 mm |
| *GAS TYPE | Natural Gas |
| TEMPERATURE | Thermostat Control |
| DIMENSION (WDH) | 36" x 32.7" x 16.7" / 915 x 830 x 425 mm |
| PACKAGING DIMENSIONS (WDH) | 38" x 32" x 18.5" / 965 x 820 x 470 mm |
| WEIGHT | 228 lbs/ 103.50 kg |
| PACKAGING WEIGHT | 275 lbs/ 124.70 kg |

TECHNICAL DRAWING & DIMENSIONS



Gas conversion to be completed by an approved gas field technician

COOKING EQUIPMENT
COUNTERTOP STAINLESS STEEL GAS
GRIDDLE WITH THERMOSTATIC CONTROL



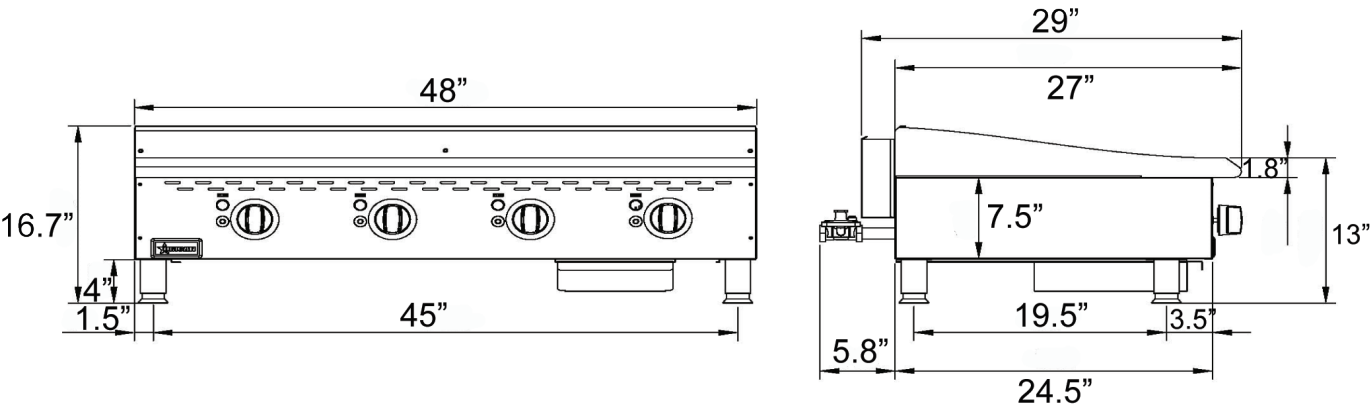
COUNTERTOP STAINLESS STEEL GAS GRIDDLES WITH THERMOSTATIC CONTROL
With 4 Burners



- Stainless steel construction and finish
- 3/4" thick polished steel and cooking surface
- Thermostatically controlled independent cooking zones
- Large and robust dial controls
- Stainless steel burners
- Burner thermostatic valves
- Removable full width waste tray
- Heavy-duty adjustable feet
- 3/4" rear gas connection
- Propane Conversion kit (43308) included

| TECHNICAL SPECIFICATION | |
|----------------------------|---|
| ITEM NUMBER | OM43019 |
| MODEL | CE-CN-G48TPF |
| NUMBER OF BURNERS | 4 Burners |
| B.T.U. | 120,000 |
| COOKING AREA (WD) | 48" x 20" / 1220 x 510 mm |
| *GAS TYPE | Natural Gas |
| TEMPERATURE | Thermostat Control |
| DIMENSION (WDH) | 48" x 32.7" x 16.7" / 1220 x 830 x 425 mm |
| PACKAGING DIMENSIONS (WDH) | 50" x 32" x 18.5" / 1270 x 820 x 470 mm |
| WEIGHT | 300 lbs/ 136 kg |
| PACKAGING WEIGHT | 360 lbs/ 163.15 kg |

TECHNICAL DRAWING & DIMENSIONS



Gas conversion to be completed by an approved gas field technician