

Project _____
Item _____
Quantity _____
CSI Section 11400
Approved _____
Date _____

US Range Summit Series Electric Convection Oven

Models

- SUME-100
- SUME-200



Model SUME-100

Standard Features

- Solid State control with digital timer
- 2-speed fan control (high & low) with .6 HP fan motor
- Total of 10.4 kW loading per oven cavity
- Stainless steel front, sides, top, and legs
- 60/40 dependent door design with double pane thermal window in left-hand door and interior lighting
- Porcelain enameled oven interior with coved corners
- Five (5) chrome plated ovens racks on 13-position rack guides
- Double deck models available, 200 series models

Warranty

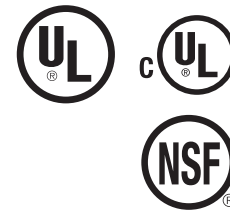
- One year limited parts and labor warranty (USA and Canada only)
- Five year limited door warranty, excluding window (USA and Canada only)

Options & Accessories

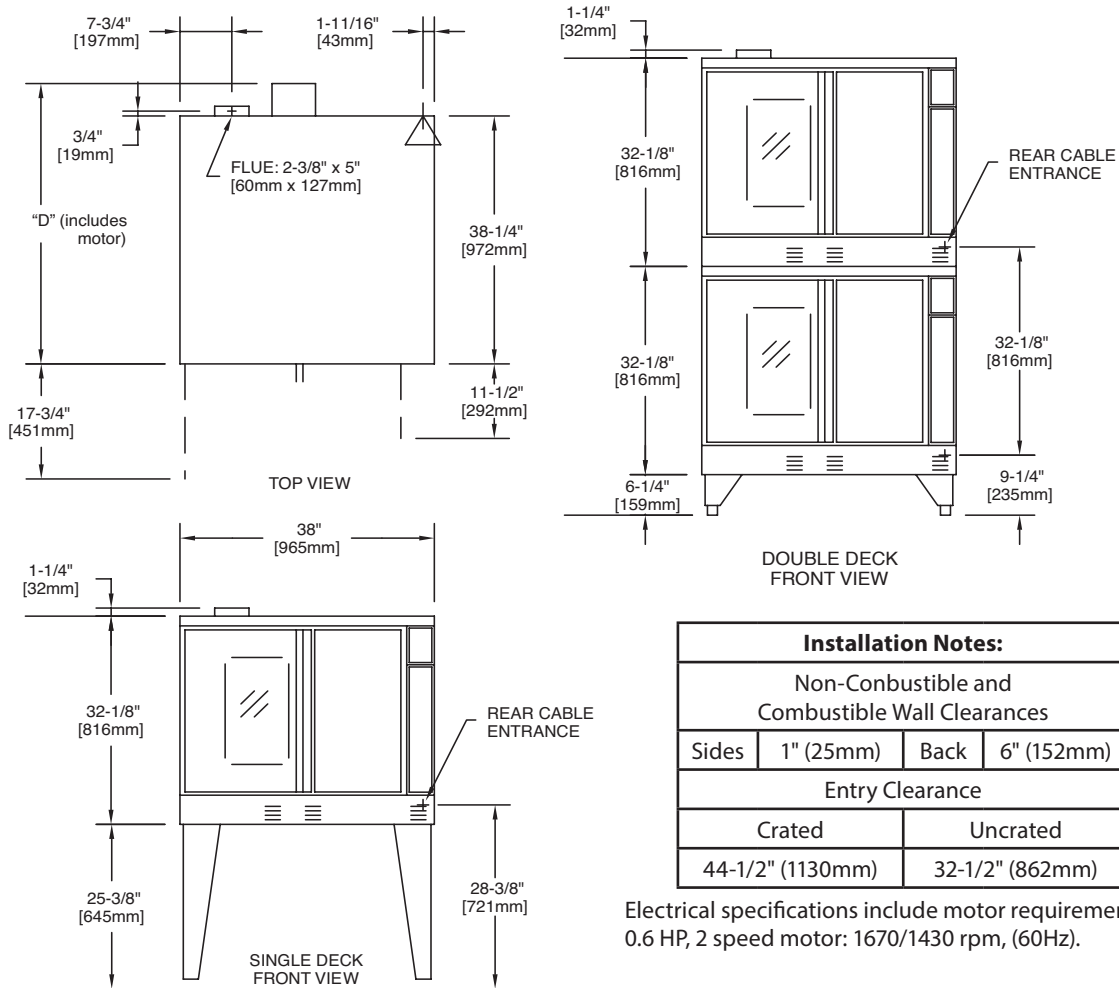
- Windows in both doors
- 208 or 240 Volt convection oven motor
- Extra oven racks
- Swivel casters, (4) w/ front brakes
- Low profile casters, (4) w/ front brakes
- Open base with rack guides and shelf (stainless steel)
- Direct connect vent
- Back enclosure (stainless steel)
- Maximum Security Options available
- Removable stainless steel drip pan

Specifications

- U.S. Range Summit Full-Size Standard Depth, electric convection oven.
- 10.4 kW/cavity, 0.6 HP fan motor with two speed fan control
- Solid State Control with digital timer.
- Porcelain enameled oven interior with coved corners, five (5) oven racks and 13-position rack guides.
- All model interiors are 29" (736mm) W by 24" (610mm) H, depth is 24" (610mm) Stainless steel front, sides, top, and legs. 60/40 dependent door design with double pane thermal window in left-hand door and interior lighting.
- 200 Models are double deck units. Specify voltage if other than 115 volt, 60 Hz, 1 phase.
- UL, CUL Gas-Fired and NSF Listed.



US Range Summit Series Electric Convection Oven



Installation Notes:			
Non-Combustible and Combustible Wall Clearances			
Sides	1" (25mm)	Back	6" (152mm)
Entry Clearance			
Crated		Uncrated	
44-1/2" (1130mm)		32-1/2" (862mm)	

Electrical specifications include motor requirements. 0.6 HP, 2 speed motor: 1670/1430 rpm, (60Hz).

SINGLE-DECK MODELS	Interior Dimension (per oven)			Exterior Dimension			Ship Wt./Size	
	W:In(mm)	H:In(mm)	D:In(mm)	W:In(mm)	H:In(mm) *	D:In(mm)	Lbs./Kg	Cu Ft
Standard Depth	29(436)	24(610)	24(610)	38(965)	57-1/2(1416)	41-1/4(1048)	460/210	58.5

DOUBLE-DECK MODELS	Interior Dimension (per oven)			Exterior Dimension			Ship Wt./Size	
	W:In(mm)	H:In(mm)	D:In(mm)	W:In(mm)	H:In(mm) *	D:In(mm)	Lbs./Kg	Cu Ft
Standard Depth	29(436)	24(610)	24(610)	38(965)	70-1/2(1791)	41-1/4(1048)	920/415	117

* Height with or without standard casters. Height with low profile casters (double deck) is 68-1/2" (1740mm).

MODELS**	Total kW	Nominal Amperes Per Line (includes .6 HP fan motor)										
		208v/1Ph		240V/1Ph			240V/3Ph			460V/3Ph		
		X	Y	Z	X	Y	Z	X	Y	Z	X	Y
Standard Depth	10.4	50	43	30	30	28	26	26	24	14	14	13

**NOTE: Double deck models with suffix - "20M" are provided with individual power supply connections

Welbilt reserves the right to make changes to the design or specifications without prior notice.